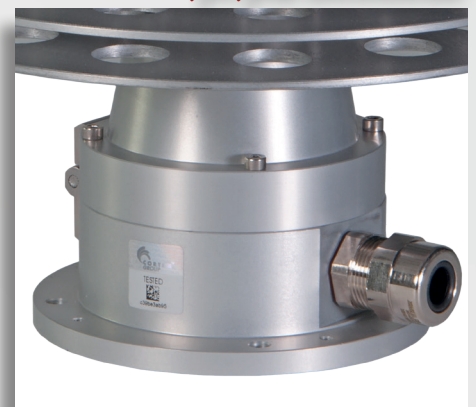


XLFE-MIA XLFE-MIC



- Zone 1, 2, 21, 22
- Obstruction warnings MEDIUM INTENSITY type A or C
- LED technology
- Lifespan more than 10 years
- Easy to install
- Complies with ICAO



XLFE-MIA Medium intensity LED Obstruction lighting fixtures

XLFE-MIA and XLFE-MIC series medium intensity LED Obstruction lighting fixtures can be installed in hazardous areas of industrial plants classified as Zone 1, Zone 2, Zone 21, Zone 22.

The flashing white color XLFE-MIA, with an intensity greater than 20,000 candles in daytime operation and greater than 2,000 candles in night-time operation, complies with ICAO annex 14 for aviation obstruction warning lights of medium-intensity type A.

The fixed RED color XLFE-MIC, with an intensity greater than 2,000 candles, complies with ICAO annex 14 for aviation obstruction warning lights of medium-intensity type C.

The XLFE-MIA and XLFE-MIC series have been designed for Zone 1 with an 'Ex db' optical source. The particular design avoids any type of optical error typical of the glass globes. The lamp body performs both the function of explosion protection and heat sink, thus avoiding the use of resin-coated optics, which are subject to deterioration over time.

The signalling device is not a stand-alone device but it is part of a system that provides power from a control panel. This choice reduces maintenance operations by making the power supplies accessible from the control panel.

With this system it is possible to manage the control of the lighting equipment failures, the eventual switching on of the spare indicators, the synchronization between different control panels also via cable or GPS technology.

Application sectors:



CERTIFICATION DATA

Classification:

Group II

Category 2GD

Installation: EN 60079.14

zone 1 - zone 2 (Gas)

zone 21 - zone 22 (Dust)

Marking:

CE 0722 Ex II 2GD Ex db eb IIC T4 Gb; Ex tb IIIC T1 10°C Db IP66

Certification:

ATEX CML 19 ATEX 1333X

IECEx IECEx CML 19.0102X

UKEX AVAILABLE

For all IEC Ex and UKEX certificate data download the certificate from www.cortemgroup.com

Standards:

CENELEC EN 60079-0: 2018, EN 60079-1: 2014, EN 60079-31: 2014, EN 60079-28: 2015, EN 60079-7: 2015 and DIRETTIVA EUROPEA 2014/34/UE
IEC 60079-0: 2017, IEC 60079-1: 2014-06, IEC 60079-28: 2015, IEC 60079-31: 2013, IEC 60079-7: 2017
European Directive 2004/108 Electromagnetic compatibility
European Directive 2012/19/UE, 2002/96/CE, 2003/108/CE WEEE
European Directive 2011/65/UE RoHS

Class temperature:

70°C (T6)

90°C (T5)

Ambient temperature:

-40°C +40°C (T6)

-40°C +60°C (T5)

Degree of protection:

IP66

XLFE-MIA Medium intensity LED Obstruction lighting fixtures



ORIGINAL PRODUCT

MECHANICAL FEATURES

Body:	Low copper content aluminium alloy fitted with cooling fins for better heat dissipation
Finish:	Anodic oxidation surface treatment suitable for structural parts with high corrosion resistance requirements.
Glass face:	Shock and temperature resistant borosilicate glass sealed with aluminium shade ring
Internal reflector:	Chrome-plated aluminum
Gaskets:	Silicone acid/hydrocarbon and high temperatures resistant
Mounting:	See "XLFE-MIA series dimensional drawings"
Bolts and screws:	Stainless steel
Entries:	1 ISO M20 entry

ACCESSORIES AVAILABLE / SPECIAL REQUESTS

The fixed RED color **XLFE-MIC**, with an intensity greater than 2,000 candles, complies with ICAO annex 14 for aviation obstruction warning lights of medium-intensity type C.

Ex or watertight protected control panel

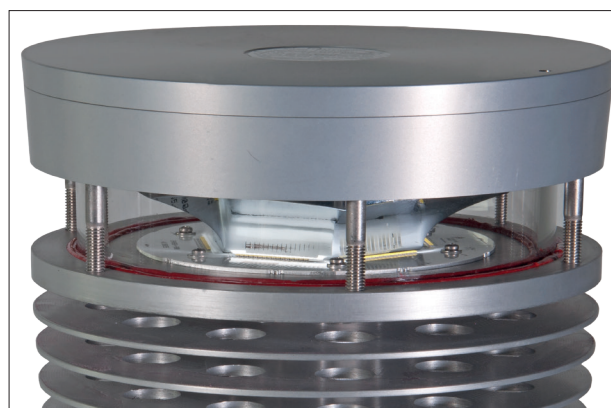
Cable gland: NAV201B for non-armoured cable or NEV201B for armoured cable

Heat shield

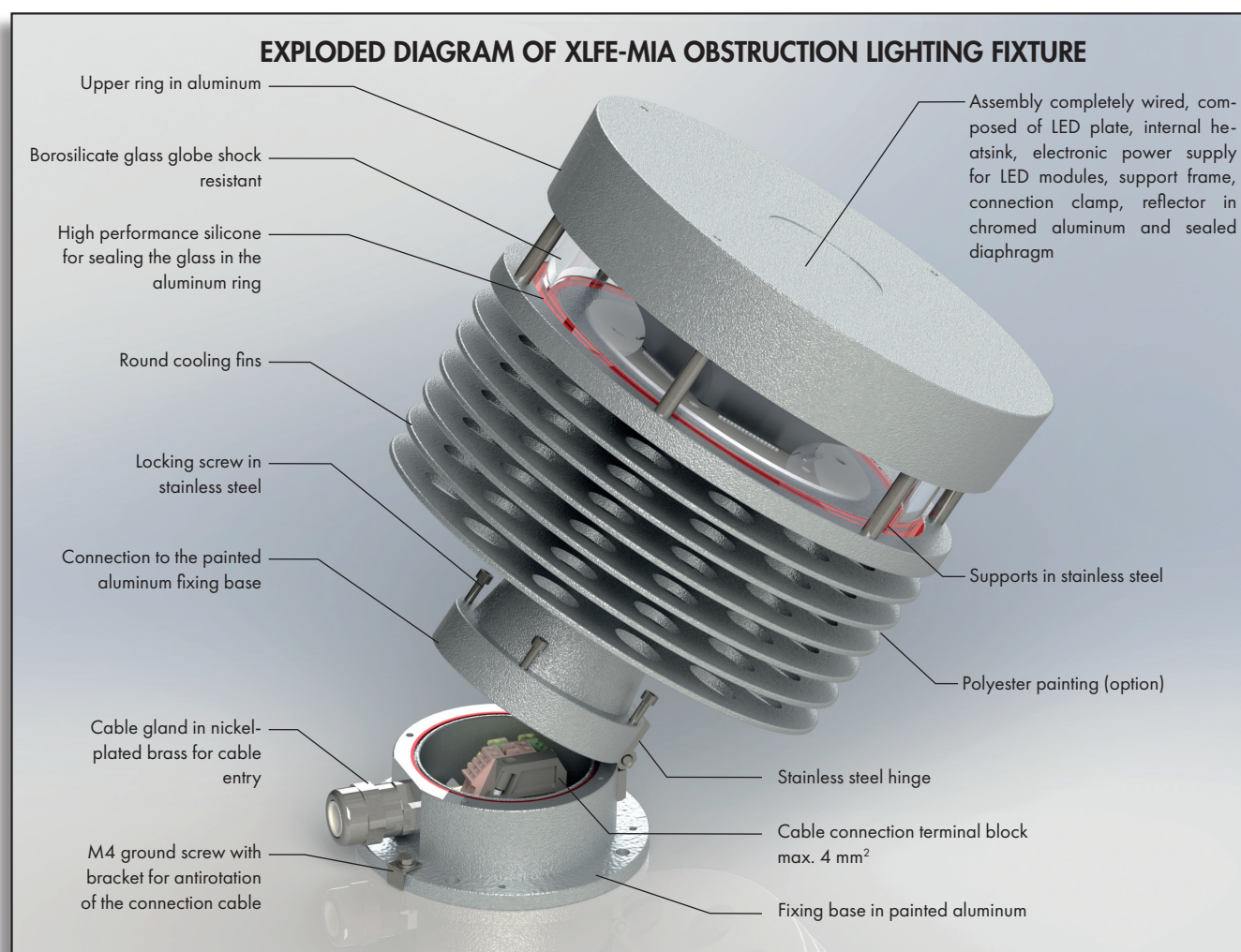
Polyester painting

COMPLIANCE

ICAO Regulations. The white XLFE-MIA series lighting fixtures, with an intensity greater than 20,000 candles in daytime operation and greater than 2,000 candles in nighttime operation, complies with ICAO annex 14 vol I. June 2016 for aviation obstruction warning lights of medium-intensity type A. In accordance with the provisions of this standard, the luminous flux of the lighting fixture on the horizontal plane is 360° while on the vertical plane it is 3°.

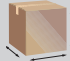


XLFE-MIA Medium intensity LED Obstruction lighting fixtures

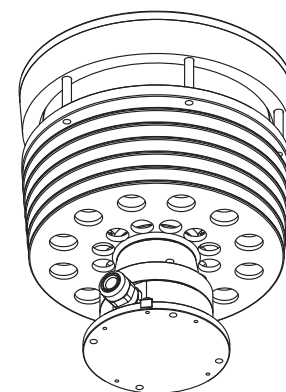
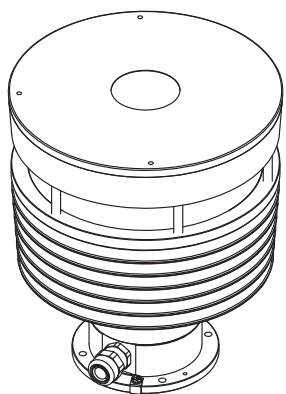


Features	XLFE-MIA	XLFE-MIC
Type of product:	Obstruction lighting fixture Medium intensity Type A	Obstruction lighting fixture Medium intensity Type C
Light source:	LED	LED
Color:	White	Red
Typical use:	Day and night hours	Night hours
Power consumption:	60 W	72 W
Connection:	Direct connection to terminal board ⊕, ⊖, PE. Section 4 mm ²	Direct connection to terminal board ⊕, ⊖, PE. Section 4 mm ²
Flashing rate:	20 - 40 fpm (flash for minute)	STEADY
Vertical beam spread:	3°	3°
Minimum light intensity (360°):	20.000 cd daytime operation 2.000 cd in nighttime	2.000 cd in nighttime
Horizontal coverage:	360°	360°

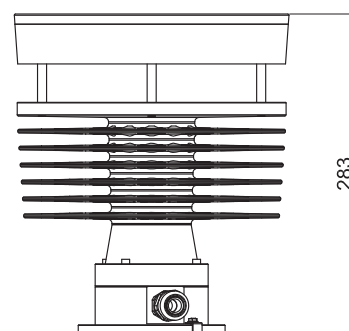
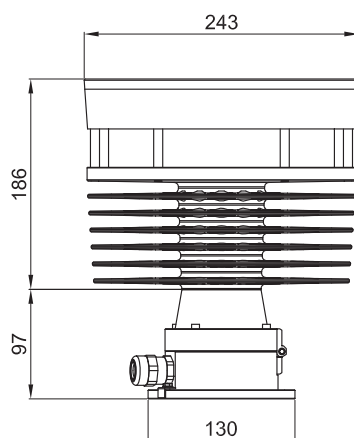
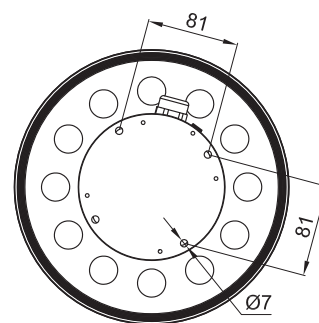
XLFE-MIA Medium intensity LED Obstruction lighting fixtures

Code	Colour light	Type of light	Type of circuit	Power	Weight kg	 mm
XLFE-MIA	White	Flash	Single	60 W	8,5	260x250x300

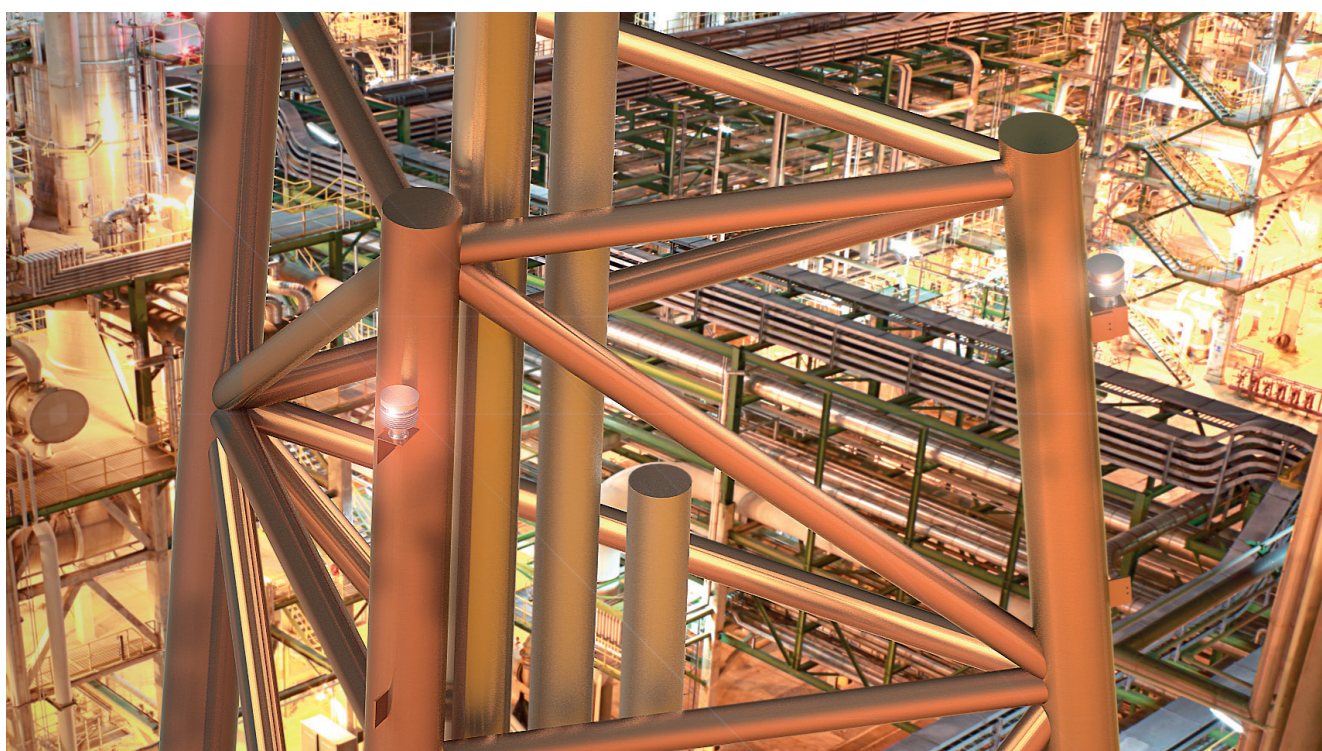
DIMENSIONAL DRAWING



Close up of mounting

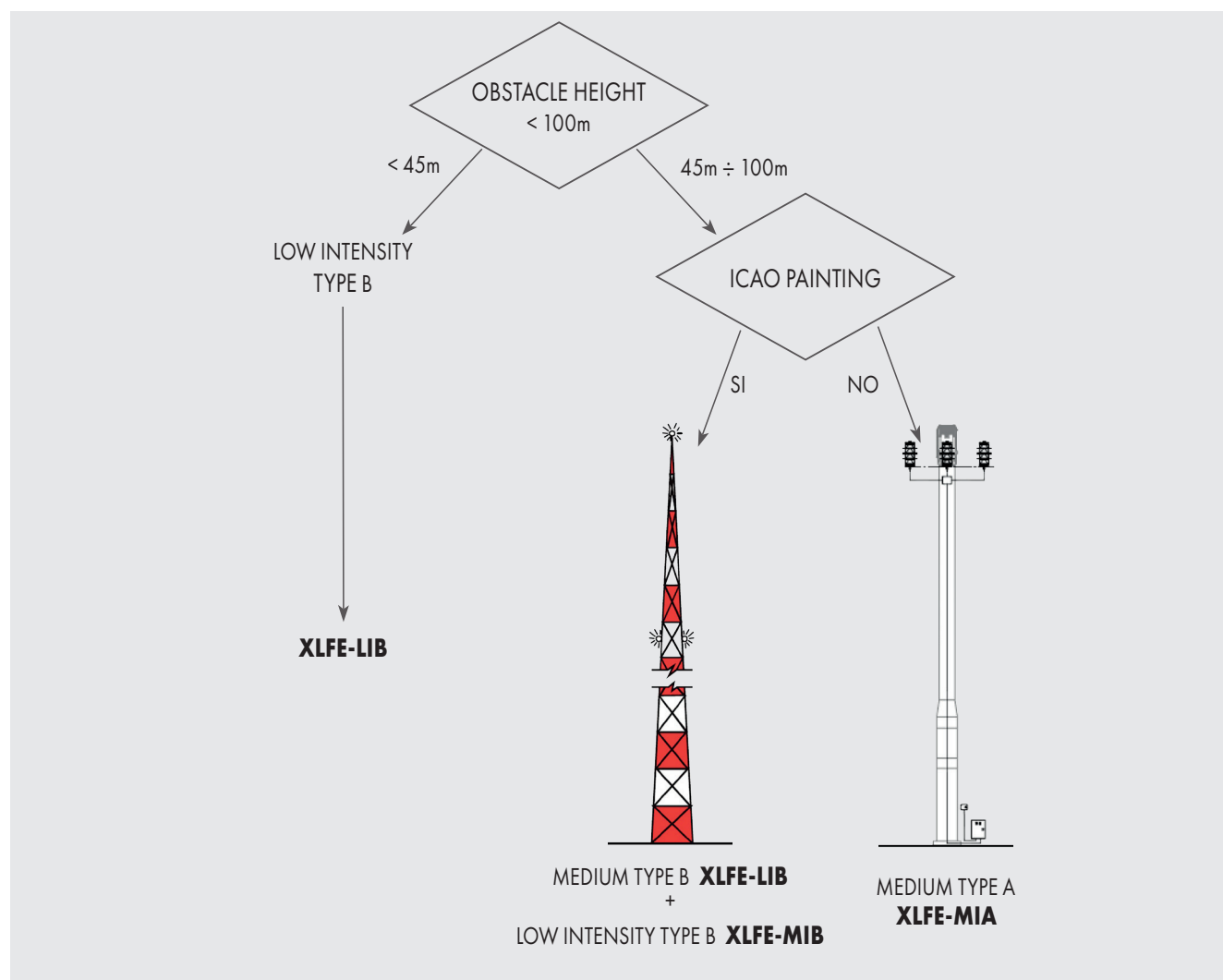


Dimensions in mm



XLFE-MIA Medium intensity LED Obstruction lighting fixtures

Products selection flow-chart



Mounting scheme

